



Tip of the Month



KCDEM

Kitsap County Department of Emergency Management

May 2010

Make a Family Emergency Plan

Tips IN SUMMARY

Identify a SAFE PLACE

Practice EVACUATION

EDUCATE Your Children

Learn First-Aid & CPR

Locate Emergency Services

Enter your "ICE"

Meet your NEIGHBORS

Special points of interest:

- * Mark the locations of the shutoffs for your gas, water, and electricity.
- * You should have at least two (2) escape routes from *each room*
- * Fill out a Family Communication Plan available at [FEMA](#)

1. Identify a safe place in each room of your home and practice rapidly getting there. Best locations include under a sturdy desk or table, or beside a sturdy, large piece of furniture such as a sofa or bed. Avoid doorways; doors will bang open and shut in a large earthquake.

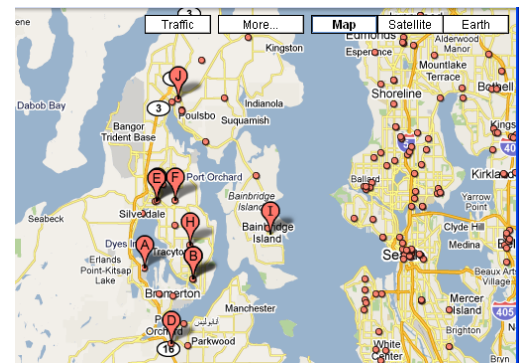
2. Practice home-evacuation drills. Choose someplace nearby for your family to meet. Expect a lack of transportation.

3. Educate your children.



Get a copy of your school district's disaster policy regarding transportation and the release of students. Keep photos of family members in your wallet in case someone is missing.

4. Take a first-aid course. Learn CPR. Contact your local Red Cross office for information about courses



5. Know where the nearest police and fire stations are. Know the route to the nearest hospital emergency room. Keep critical phone numbers and your insurance-policy numbers by your phone and in your wallet.

6. Enter your "ICE" — In Case of Emergency — numbers on your cell phone so emergency workers will know whom to contact if you're hurt. For example, enter "ICE husband John" and the phone number.



7. Meet your neighbors and find out whether they have medical or other expertise. Plan to unite if your neighborhood becomes isolated. Help elderly, disabled or single-parent neighbors