




Tip of the Month

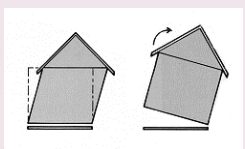


July 2010

AFTER AN EARTHQUAKE Recognizing Structural Damage

What to do OUTSIDE —>

 Earthquake forces can demonstrate a variety of motions such as jolts, side to side shaking, rolling, up and down movement etc.



Damage to your home or office is dependent upon the materials it is built with and the geology of your location.

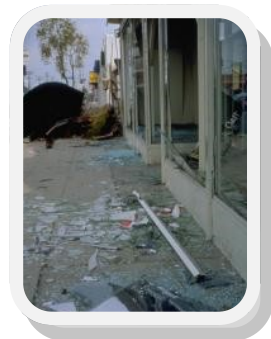
1. Walk around the house and check for any damage on all accessible sides. Any gaps or cracks greater than an eighth of an inch, buckling bulging, bowing or bending trusses, beams or posts may indicate internal damage.



2. Look for new fractures in the foundation



3. Broken or unbroken glass is not an indicator for safety or danger.



4. Look for loosened brick that has or could fall from your veneer or chimney.



5. Stand about 20 feet away to see if your house or building is crooked or leaning. This could mean the structure has moved.



Next Month
We will talk about what
to look for
INSIDE the building